

# JMobile

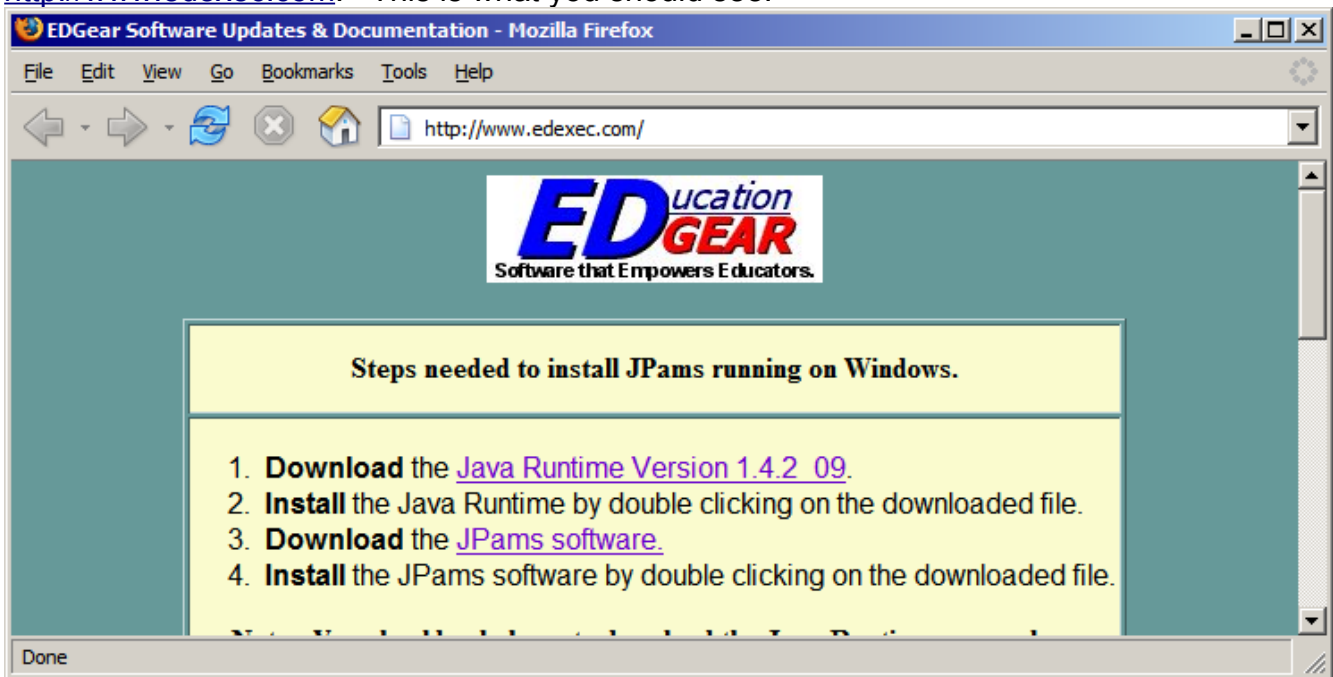
## Requirements, Installation, And Updates

### Part I – Requirements

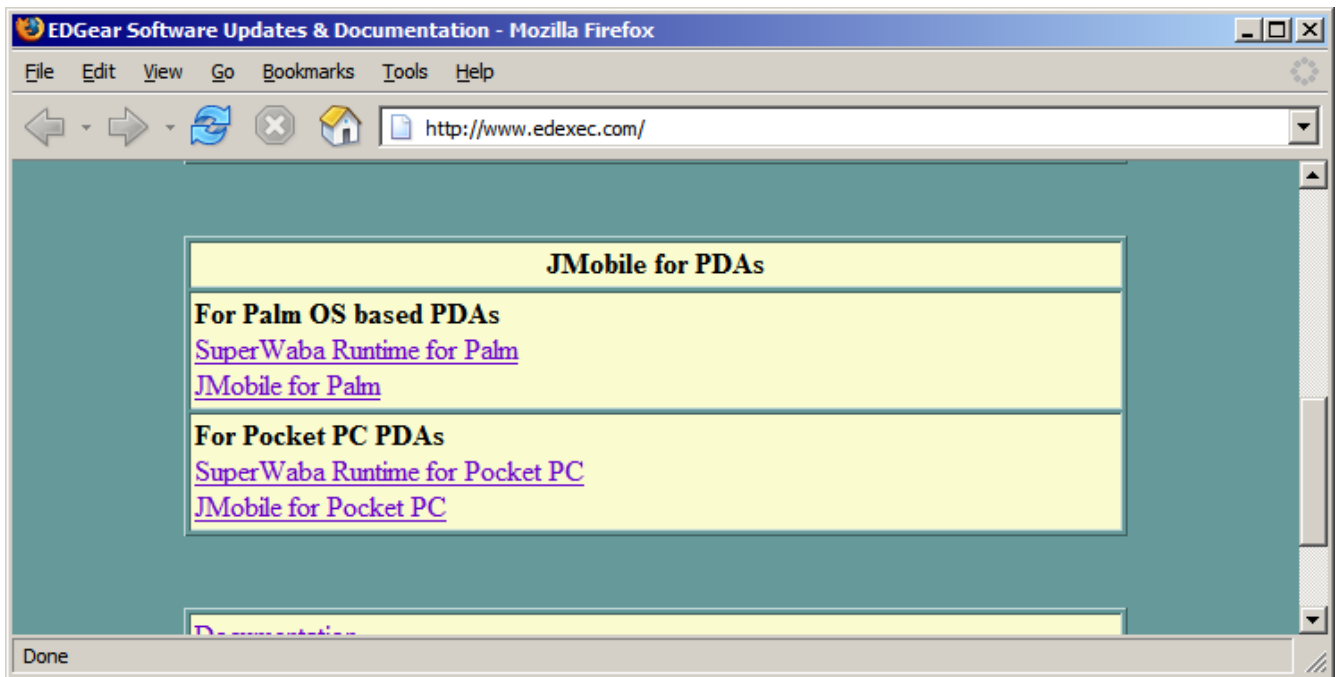
**JMobile for PDAs** requires use of **JPams** and a **Palm-based Personal Data Assistant** (PDA) running the Palm Operating System version 5 or higher, with at least 32 megs of memory/space to store data. We recommend and have tested the Palm Tungsten series of PDAs, and recommend the Palm Tungsten T3, T5, or TX.

### Part II – Installation

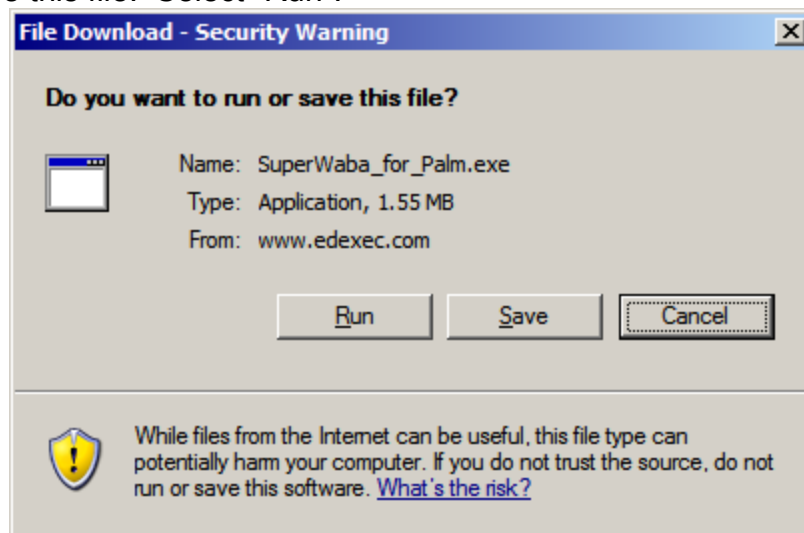
To install JMobile on your PDA, open your webbrowser and go to <http://www.edexec.com>. This is what you should see:



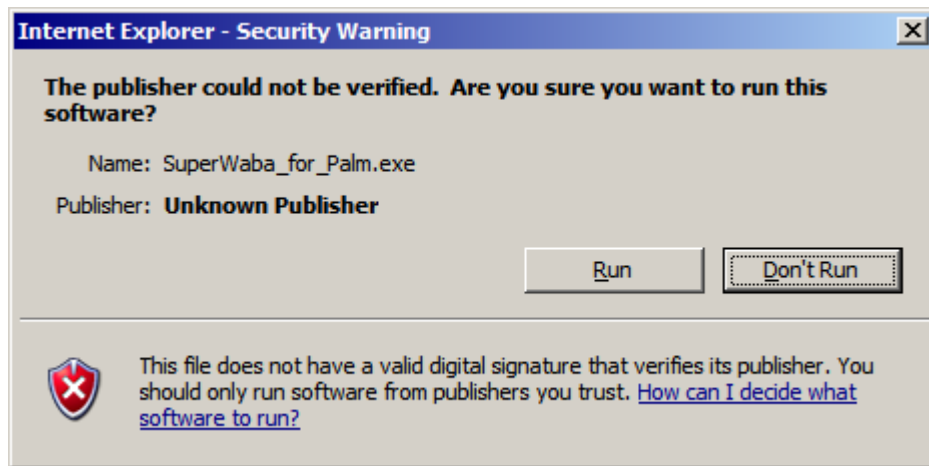
Scroll down on this page until you see the section titled “JMobile for PDA's”:



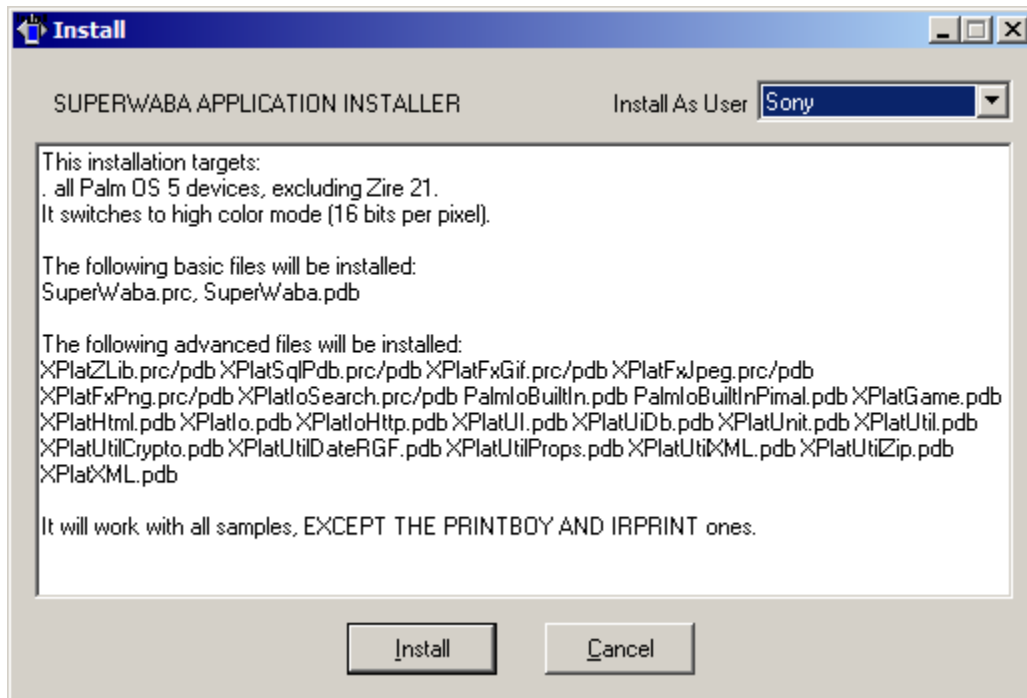
First, you'll need to select "SuperWaba Runtime for Palm". Doing this will ask if you want to run or save this file. Select "Run".



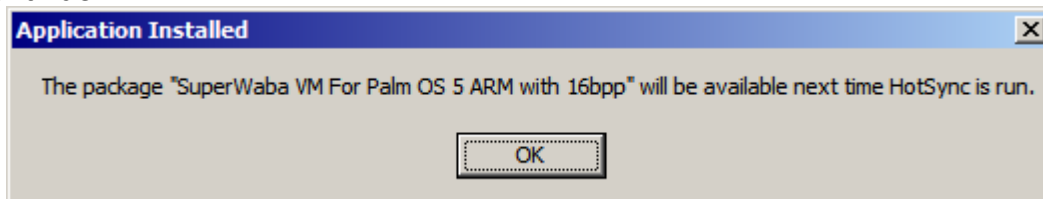
At this point the file will download. It is generally one and a half megabytes and should download fairly quickly. When it finishes, it may present a warning. You should select "Run" to continue the installation.



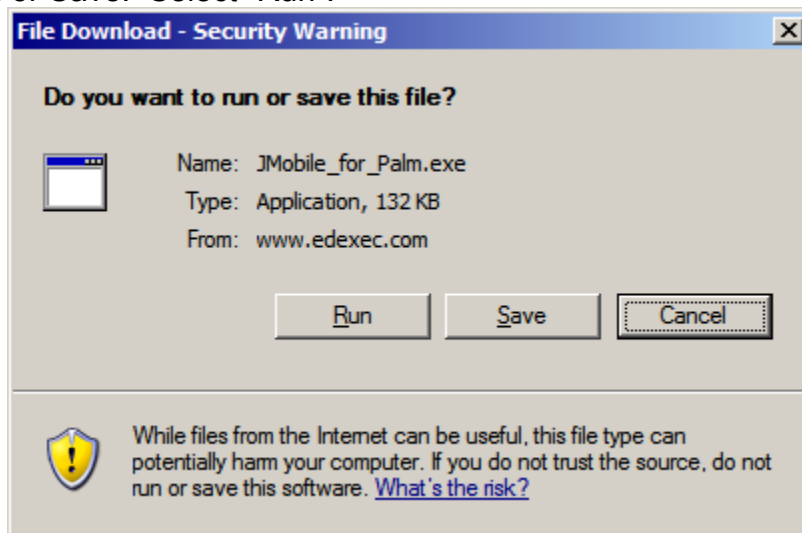
At this point, the software installation screen will show. Just select "Install".



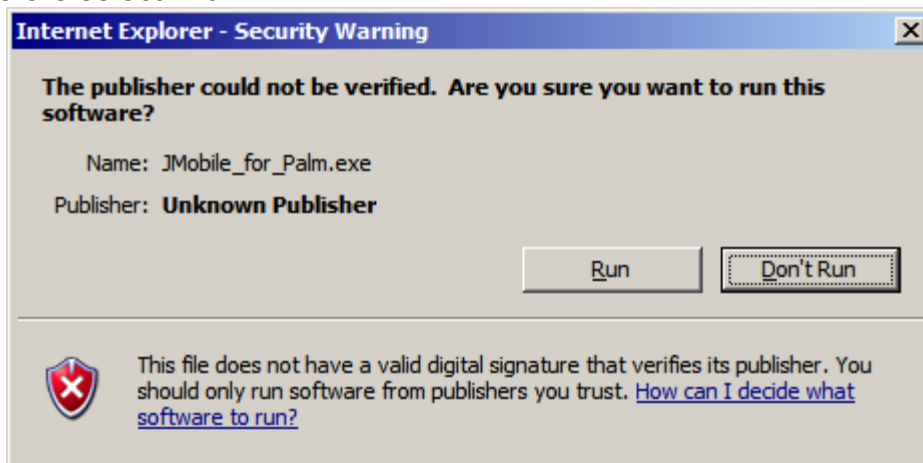
A confirmation box will appear telling you this will be installed next time you HotSync, select "Ok" to continue.



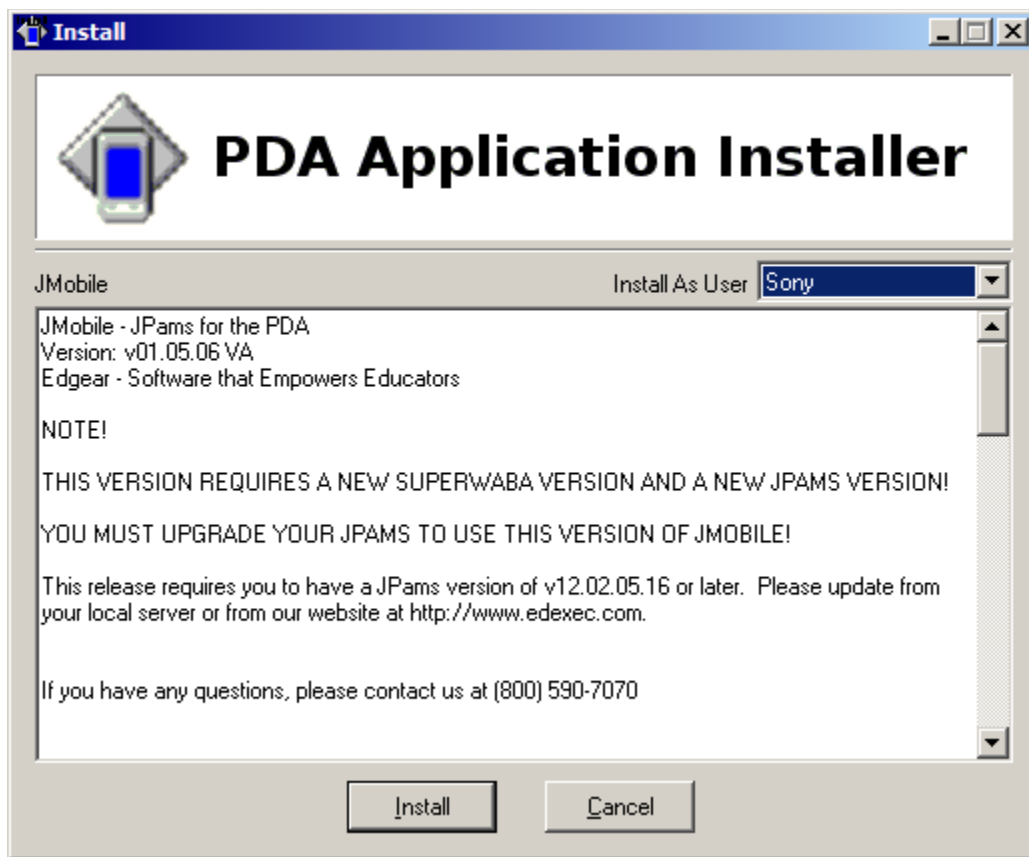
At this point, return to your web browser and select “JMobile for Palm”. This will again ask you if you want to Run or Save. Select “Run”.



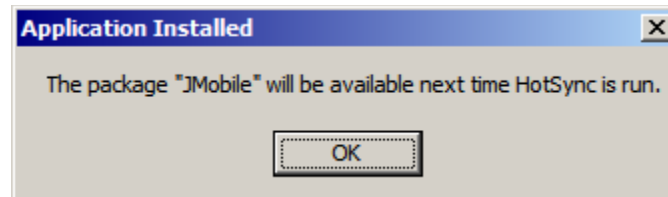
This file is fairly small and should download within seconds. You may be prompted with a warning, as before select “Run”.



This will bring up the installation dialog. Select “Install”.



This will bring up the confirmation window again, stating the software will be installed next time HotSync is run.



At this point, you need to HotSync your palm. This varies from unit to unit, but generally is done by pressing the button available on the plug that attaches to your Palm. Wait till this is complete before continuing.

Your software is installed! Please continue to the next section to load the student data on your system. Your software will not work without loading the student data first!

### Part III – Updating your information

To create new student data for JMobile, go into JPams. In the top right-hand corner of the main PAMS screen, select Handheld, then run option #2 “Create Handheld Databases”.



This will bring up the setup screen:

School Year: 0506

School Range: 010 Edgegear High School | 010 Edgegear High School

District Range: 016 | 016

Grade Range: -1 | 12

Databases:

- Security
- Student Demographics
- Active Students only
- Load Pictures
- Pictures on Server
- Grades
- Schedules
- Discipline
- School Staff (requires HR)
- Substitutes

Buttons: Create, Close

For the School Range, you should select your school name in both fields.

For the District Range, you should select your district number in both fields.

For the Grade Range, you should select the grade range of students to get data for. You can set this for “-1” to “12” to include all students at your school.

The right side contains various options.

Security

*This contains your logins and passwords and should always be selected.*

Student Demographics

*This is your student information, addresses, etc.*

#### Active Students Only

*If this is selected, it will only gather data for students currently enrolled in your school. Otherwise it will select all students that have attended your school.*

#### Load Pictures

*If you have student pictures loaded into JPams, you can load them into JMobile as well.*

#### Pictures on Server

*This is grayed out unless you have selected to load pictures into JMobile, and specifies that your pictures are located on the JPams server.*

#### Grades

*This will load student's grades for the school year.*

#### Schedules

*This will load student schedules for the school year.*

#### Discipline

*This will load the discipline summary for students for the school year.*

#### School Staff (requires HR)

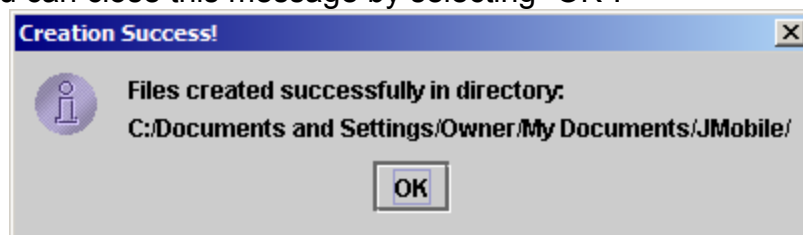
*If you use JPams Human Resources system, we can provide Name, Address, Home Phone, and Cellphone information for staff at your school.*

#### Substitutes

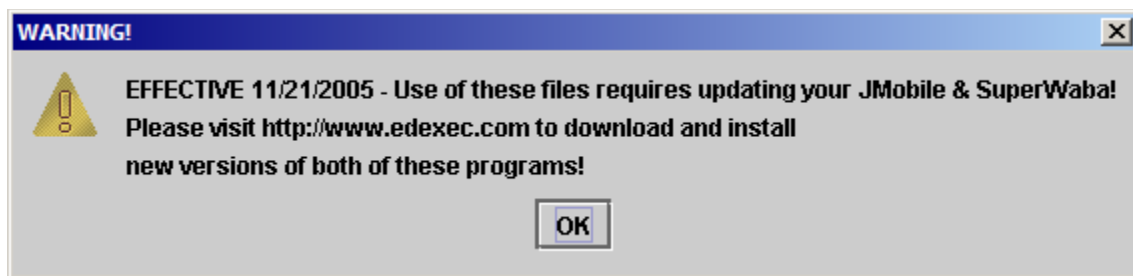
*This is grayed out unless you have selected to load School Staff. This will load information for all substitutes in your Human Resources system to be loaded as well.*

Once you have selected all the options, you may press "Create" to gather the data and create the appropriate datafiles for JMobile. This process may take several minutes depending on the options selected.

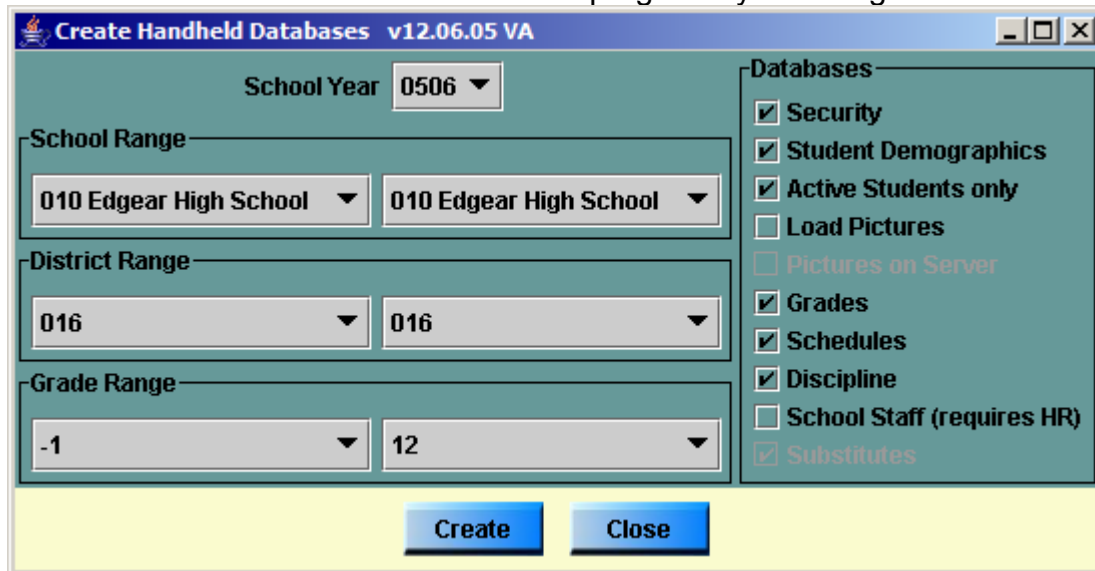
Once complete, the system will display a message giving you the location of the files that were created. You can close this message by selecting "OK".



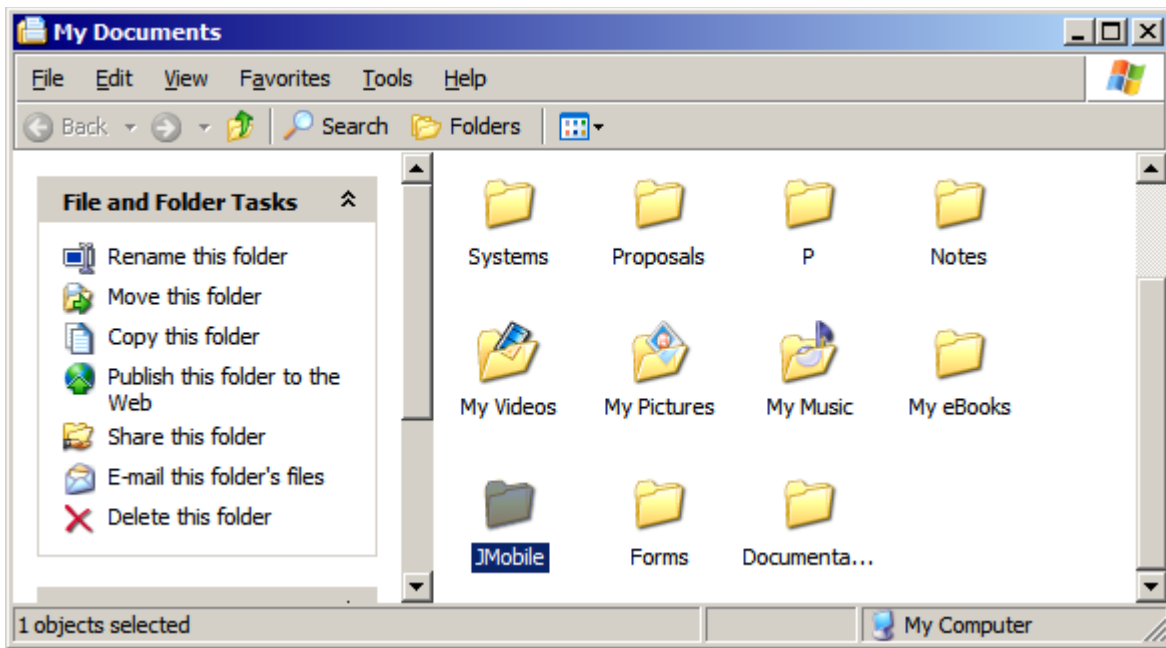
An additional message may pop up giving information about versions of software being used, and give indication of when you may need to update your SuperWaba and/or JMobile software on your PDA to support our latest enhancements. Please check the effective date as listed on this messagebox and update your software as instructed if you have not done so since the effective date. You can select "OK" to close this messagebox.



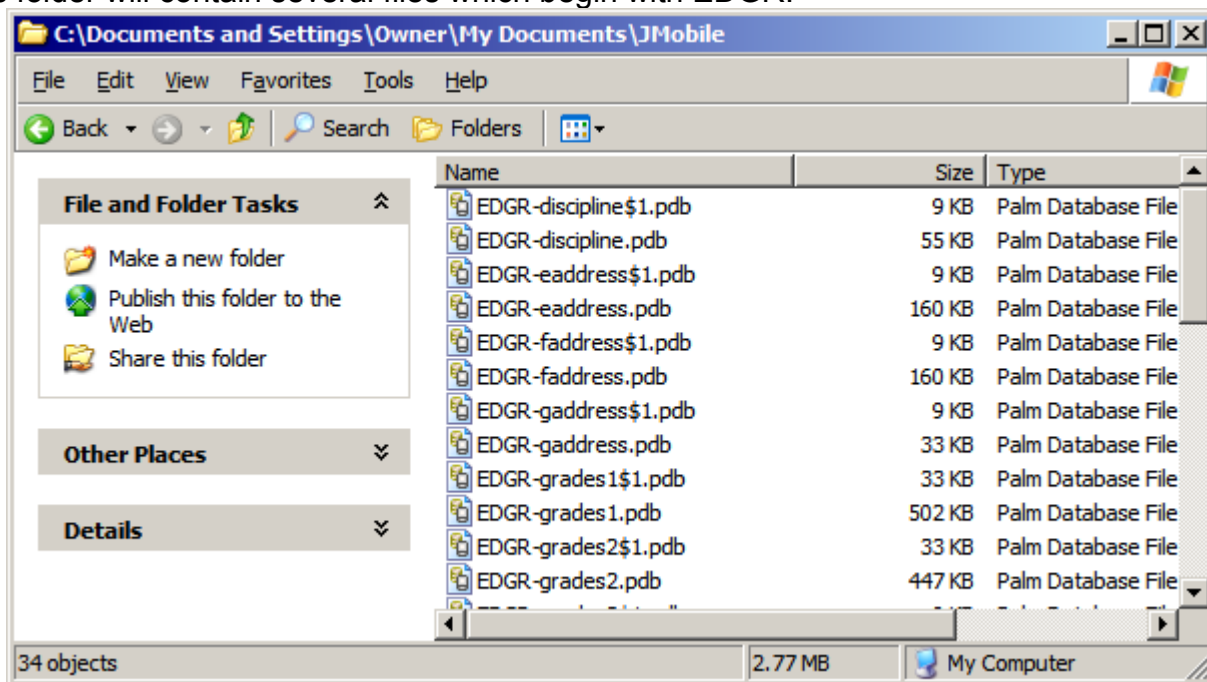
You can close the “Create Handheld Databases” program by selecting “Close” on the bottom.



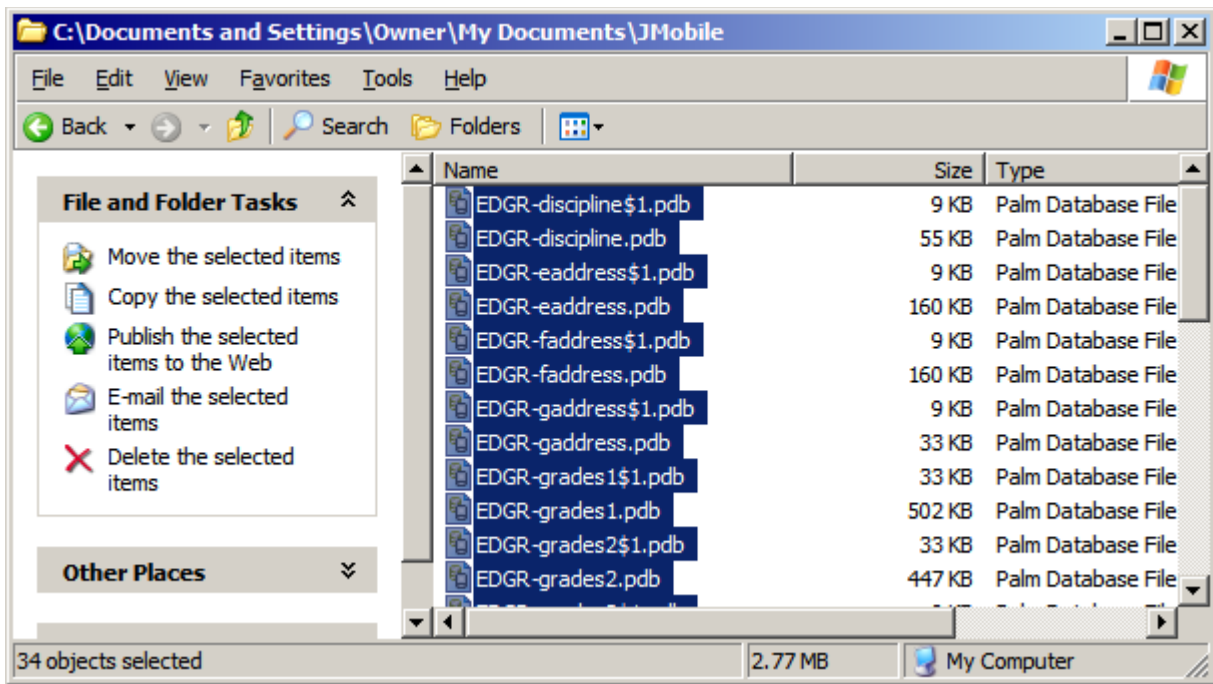
We've created the database files. Now we need to move them over to your PDA to be accessed by the JMobile software. To do this, click on your computer's “Start” Button, and select “My Documents”. In this folder, you will see a folder called “JMobile”. Doubleclick on this folder.



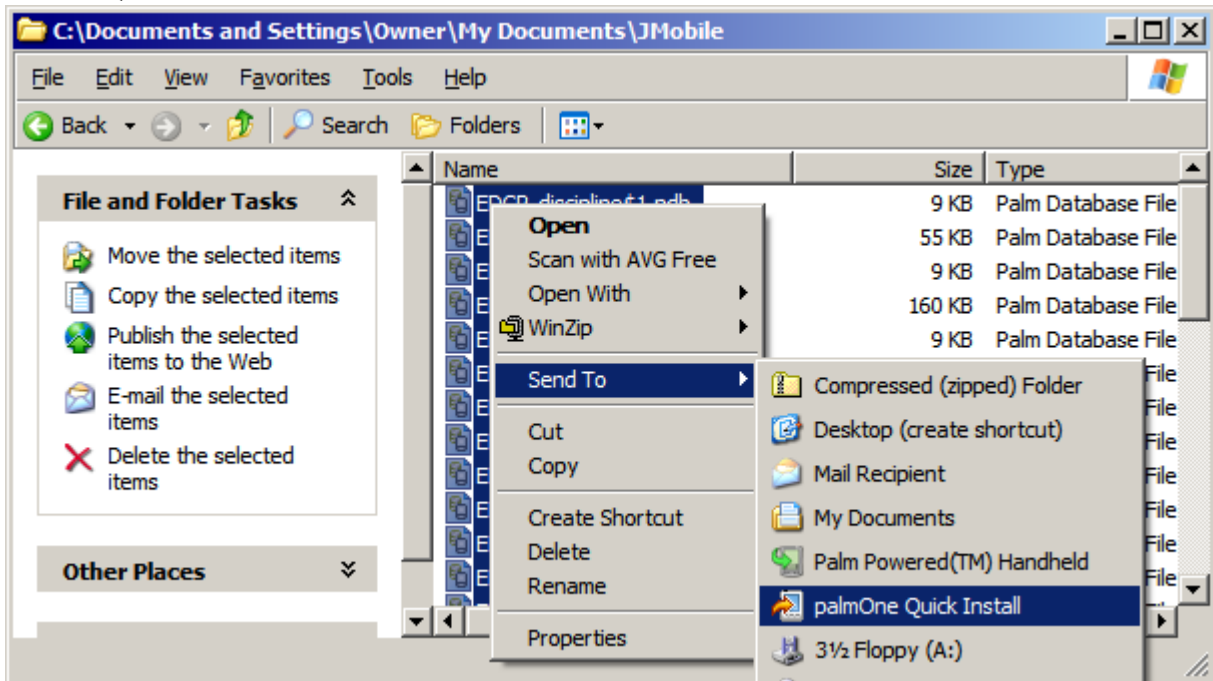
This folder will contain several files which begin with EDGR.



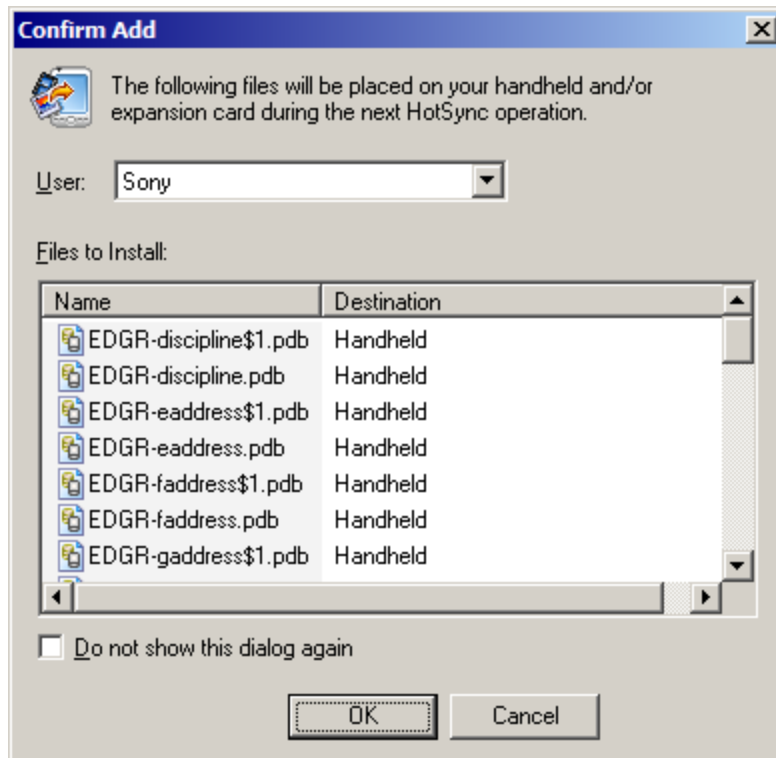
To copy these files to your PDA, select "Edit" and choose "Select All". This will highlight all of your files.



Right click on any of the files (keeping them all highlighted) and select "Send To", and choose "PalmOne Quick Install".



This will bring up a window showing the list of files again, with a message at the top that the files will be added the next time HotSync is run. Click "OK" to close that dialog.



Now, HotSync your Palm. This will copy the files over to the Palm so that we may use them with JMobile. This must be done every time the files are created so that the information on JMobile will be updated. You may do this as often or infrequently as you like.

Once HotSync completes, you are done. To run the application, find "JMobile" on your list of applications and click on this to run it. It provides two fields, the top for your username, and the bottom for your password. THIS IS THE SAME LOGIN INFORMATION YOU USE IN JPAMS. Once you are logged in, you may browse your student data, search, etc. It is suggested that you exit from JMobile every time you are done with browsing the information, to keep the information from being accessed by someone other than yourself.